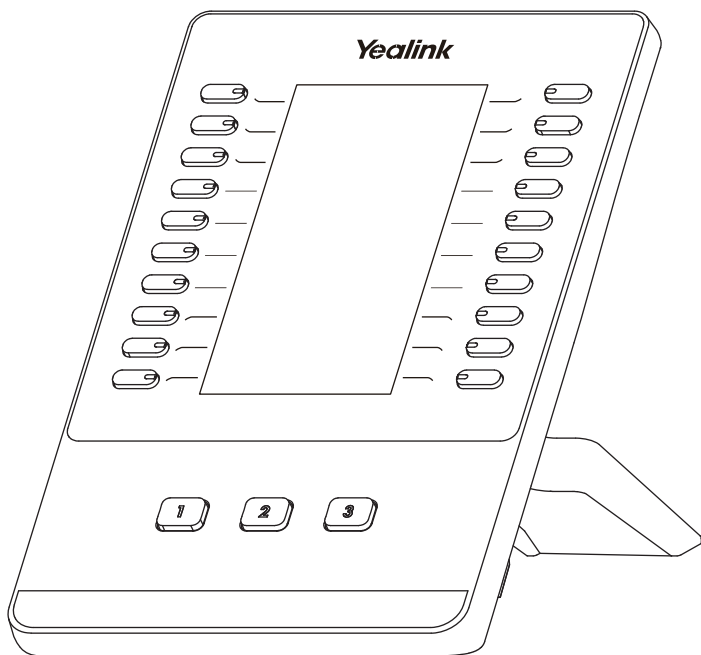


# Yealink

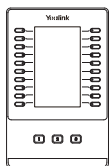
## Color-screen Expansion Module EXP43



### Quick Start Guide (V1.0)

## Package Contents

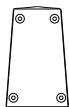
The following items are included in your package. If you find anything missing, contact your system administrator.



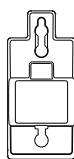
Color-screen



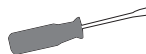
Stand



Connecting Sheet



Wallmount  
Bracket  
(Optional)



Screwdriver



Screw×4



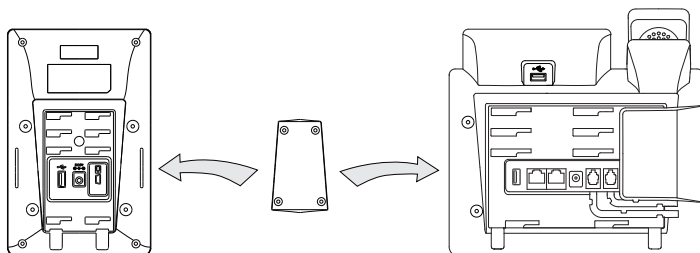
USB Cable



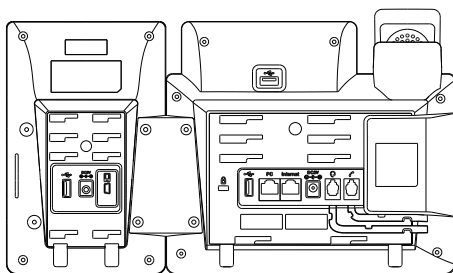
Quick Start Guide

## Connecting to the Phone

1. Connect the EXP43 and the phone using the supplied screws and connecting sheet, as shown below:

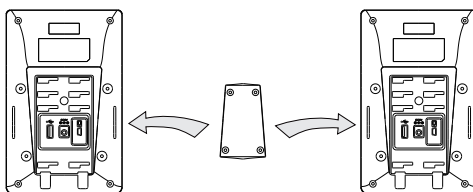


Your phone and the expansion module will be connected as shown below:

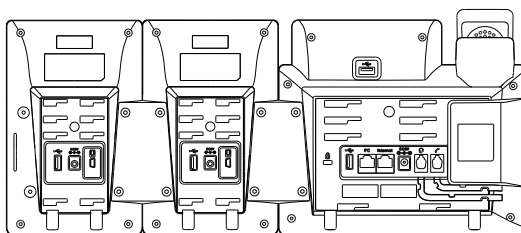


## Connecting two Expansion Modules

2. Follow the same step to connect two expansion modules:



**Your phone and the two expansion modules are connected as shown below:**

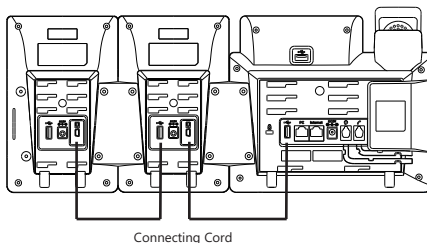


**Note:** The T43U/T46U/T48U IP phone can support 3 expansion modules at most. But if you use the expansion module on the T43U or use more than one expansion module on the T46U/T48U, you need to connect an additional Yealink power adapter (5V/2A) to any one of the expansion modules. The power adapter should be purchased separately.

## Connecting the USB Cable

3. Connect the USB jack of the IP phone and the mini USB jack of the first module using a USB cable. If you want to connect another module, connect the USB jack of the first module and the mini USB jack of the second module using a USB cable.

**As shown below:**

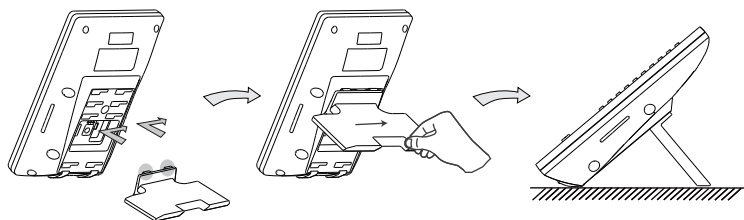


**Note:** You just need to connect the USB jack of the previous module and the mini USB jack of the next module using a USB cable.

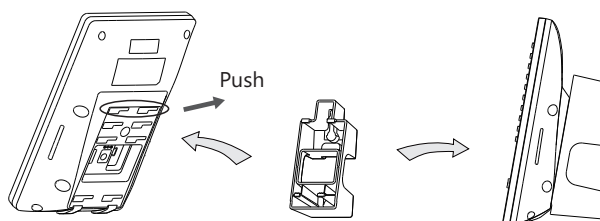
Then you can attach the stand, the power adapter and the Ethernet cable to the phone, connect the handset and headset to use.

## Assembling the EXP43

Attach the stand, as shown below:



Desk Mount Method



Wall Mount Method(Optional)

## Basic Configurations

The EXP43 supports 60 DSS keys in three screen pages. Each page displays 20 DSS keys. You can press **1**, **2** or **3** to switch to the corresponding page and use your desired DSS key.

You can assign a feature to a DSS key via phone user interface. Press the desired DSS key of EXP43 for about 5 seconds, the phone LCD screen will prompt the setting of this key. The following sections provide you with detailed instruction of assigning some frequently used features to the DSS keys via web user interface.

---

## Conference

The conference key allows you to set up a conference with a third party when already in a call.

1. Click on **Dsskey**->**Ext Key**.
2. In the desired DSS key field, select **Conference** from the **Type** drop-down menu.
3. Enter the phone number or extension of the destination party in the **Value** field.
4. (Optional.) Enter the string that will appear on the LCD screen in the **Label** field.
5. Click **Confirm** to accept the change.

## Forward

When there is an incoming call, you can press the forward key to forward the incoming call to the pre-defined destination number.

1. Click on **Dsskey**->**Ext Key**.
2. In the desired DSS key field, select **Forward** from the **Type** drop-down menu.
3. Enter the destination number to forward the incoming calls to in the **Value** field.
4. (Optional.) Enter the string that will appear on the LCD screen in the **Label** field.
5. Click **Confirm** to accept the change.

## Transfer

You can press the transfer key to perform a Blind/Semi-Attended/Attended transfer during a call.

1. Click on **Dsskey**->**Ext Key**.
2. In the desired DSS key field, select **Transfer** from the **Type** drop-down menu.
3. Enter the phone number you want to transfer the call to in the **Value** field.
4. (Optional.) Enter the string that will appear on the LCD screen in the **Label** field.
5. Click **Confirm** to accept the change.

## Hold

You can press the hold key to hold and retrieve a call.

1. Click on **Dsskey**->**Ext Key**.
2. In the desired DSS key field, select **Hold** from the **Type** drop-down menu.
3. (Optional.) Enter the string that will appear on the LCD screen in the **Label** field.
4. Click **Confirm** to accept the change.

## DND

You can press the DND key when the phone is idle to activate or deactivate the DND mode.

1. Click on **Dsskey**->**Ext Key**.
2. In the desired DSS key field, select **DND** from the **Type** drop-down menu.
3. (Optional.) Enter the string that will appear on the LCD screen in the **Label** field.
4. Click **Confirm** to accept the change.

## ReCall

You can place a call back to the caller of the last incoming call by pressing the ReCall key.

1. Click on **Dsskey**->**Ext Key**.
2. In the desired DSS key field, select **Recall** from the **Type** drop-down menu.
3. (Optional.) Enter the string that will appear on the LCD screen in the **Label** field.
4. Click **Confirm** to accept the change.

---

## SMS

You can access the SMS more quickly and easily by pressing the SMS key.

1. Click on **Dsskey->Ext Key**.
2. In the desired DSS key field, select **SMS** from the **Type** drop-down menu.
3. (Optional.) Enter the string that will appear on the LCD screen in the **Label** field.
4. Click **Confirm** to accept the change.

## Direct Pickup

If you press the direct pickup key when the specific phone number receives an incoming call, the call is answered on your phone.

1. Click on **Dsskey->Ext Key**.
2. In the desired DSS key field, select **Pickup** from the **Type** drop-down menu.
3. Enter the direct call pickup code followed by the specific number that you want to pick up a call from in the **Value** field.
4. (Optional.) Enter the string that will appear on the LCD screen in the **Label** field.
5. Select the desired line from the **Line** drop-down menu.
6. Click **Confirm** to accept the change.

## Group Pickup

You can pick up the incoming call of the pre-defined group by pressing the group pickup key.

1. Click on **Dsskey->Ext Key**.
2. In the desired DSS key field, select **Group Pickup** from the **Type** drop-down menu.
3. Enter the group call pickup code in the **Value** field.
4. (Optional.) Enter the string that will appear on the LCD screen in the **Label** field.
5. Select the desired line from the **Line** drop-down menu.
6. Click **Confirm** to accept the change.

## Call Park

You can park a call at an extension by pressing the call park key. The current call is put on hold and can be retrieved on another IP phone.

1. Click on **Dsskey->Ext Key**.
2. In the desired DSS key field, select **Call Park** from the **Type** drop-down menu.
3. Enter the call park code in the **Value** field.
4. (Optional.) Enter the string that will appear on the LCD screen in the **Label** field.
5. Select the desired line from the **Line** drop-down menu.
6. Click **Confirm** to accept the change.

## Voice Mail

You can access the voice mail more quickly by pressing the voice mail key.

1. Click on **Dsskey->Ext Key**.
2. In the desired DSS key field, select **Voice Mail** from the **Type** drop-down menu.
3. Enter the voice mail access code in the **Value** field.
4. (Optional.) Enter the string that will appear on the LCD screen in the **Label** field.
5. Select the desired line from the **Line** drop-down menu.
6. Click **Confirm** to accept the change.

---

## Speed Dial

You can speed up dialing the numbers which are frequently used or hard to remember by pressing the speed dial key.

1. Click on **Dsskey->Ext Key**.
2. In the desired DSS key field, select **SpeedDial** from the **Type** drop-down menu.
3. Enter the desired number you want to dial out directly in the **Value** field.
4. (Optional.) Enter the string that will appear on the LCD screen in the **Label** field.
5. Select the desired line from the **Line** drop-down menu.
6. Click **Confirm** to accept the change.

## Intercom

You can connect to the operator or the secretary more quickly by pressing the intercom key in an office environment .

1. Click on **Dsskey->Ext Key**.
2. In the desired DSS key field, select **Intercom** from the **Type** drop-down menu.
3. Enter the remote extension number in the **Value** field.
4. (Optional.) Enter the string that will appear on the LCD screen in the **Label** field.
5. Select the desired line from the **Line** drop-down menu.
6. Click **Confirm** to accept the change.

## Line

You can configure a DSS key as the line key. It performs the same as a hard line key.

1. Click on **Dsskey->Ext Key**.
2. In the desired DSS key field, select **Line** from the **Type** drop-down menu.
3. (Optional.) Enter the string that will appear on the LCD screen in the **Label** field.
4. Select the desired line from the **Line** drop-down menu.
5. Click **Confirm** to accept the change.

## BLF

The BLF key allows you to monitor the status of the pre-defined number. You can also pick up incoming calls of the monitored number.

1. Click on **Dsskey->Ext Key**.
2. In the desired DSS key field, select **BLF** from the **Type** drop-down menu.
3. Enter the phone number or extension you want to monitor in the **Value** field.
4. (Optional.) Enter the string that will appear on the LCD screen in the **Label** field.
5. Select the desired line from the **Line** drop-down menu.
6. Enter the directed call pickup code in the **Extension** field.
7. Click **Confirm** to accept the change.

## Group Listening

You can configure a DSS key as the group listening key. Then you are allowed to activate the Speakerphone and Handset/Headset at the same time by pressing the group listening key.

1. Click on **Dsskey->Ext Key**.
  2. In the desired DSS key field, select **Group Listening** from the **Type** drop-down menu.
  3. (Optional.) Enter the string that will appear on the LCD screen in the **Label** field.
  4. Click **Confirm** to accept the change.
-